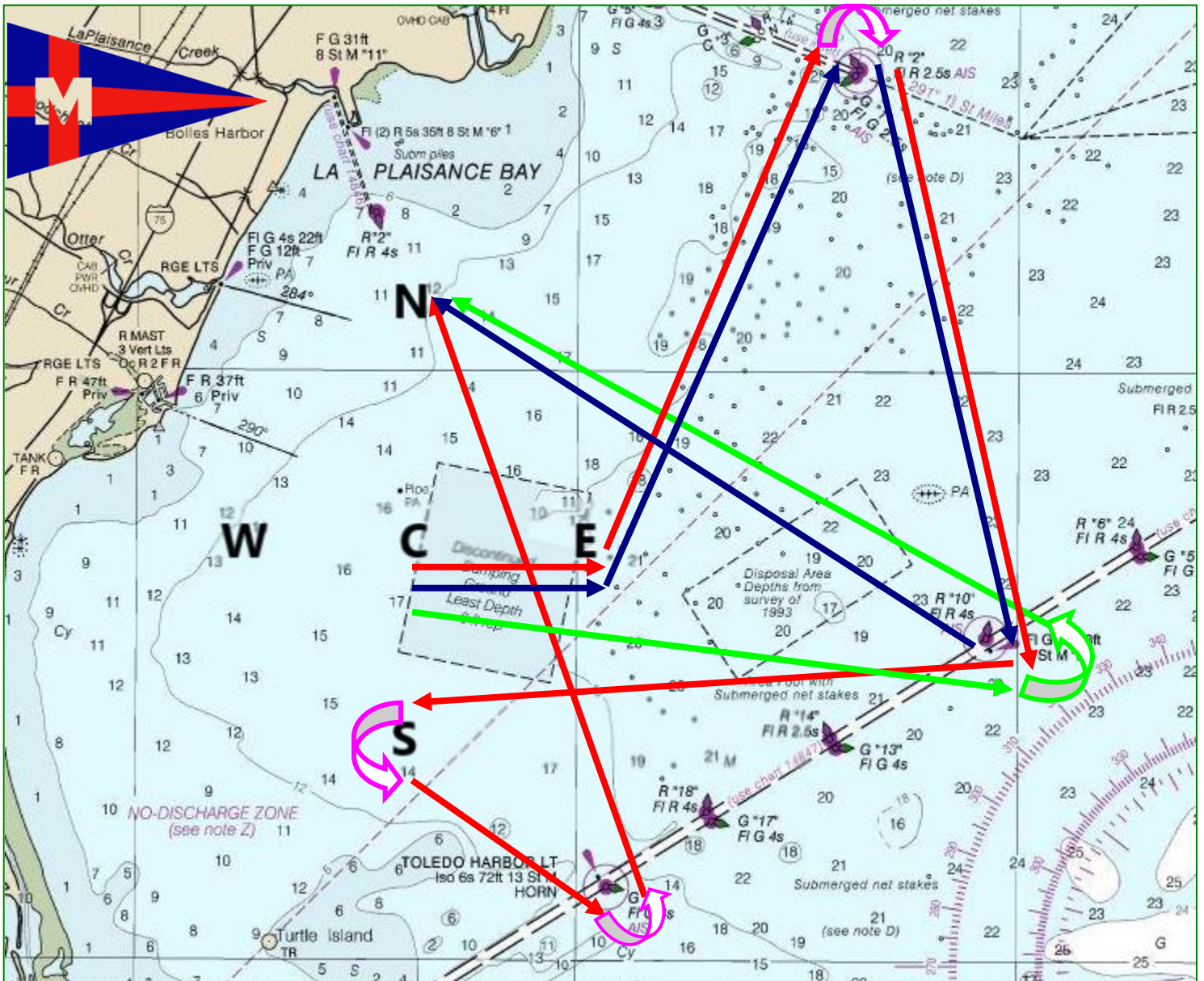


Monroe Boat Club 53rd Annual Sisters Race 2020

PHRF = RED

JAM = Blue

Cruising = Lime



MARK LOCATIONS (these locations are approximate and not necessarily in rounding order)

PHRF:

NCYC Center racing buoy
41° 49.457 N, 83° 21.842 W

NCYC East racing buoy
41° 49.457N, 83° 19.961W

Monroe Channel G-1
41° 52.517 N, 83° 16.864 W

Toledo Channel R-10
41° 47.750 N, 83° 15.354 W

NCYC South racing buoy
41° 48.048N, 83° 21.843W

Toledo Harbor Light
41° 45.711 N, 83° 19.741 W

NCYC North racing buoy
41° 50.867N, 83° 21.841W

JAM:

NCYC Center racing buoy
41° 49.457 N, 83° 21.842 W

NCYC East racing buoy
41° 49.457N, 83° 19.961W

Monroe Channel G-1
41° 52.517 N, 83° 16.864 W

Toledo Channel R-10
41° 47.750 N, 83° 15.354 W

NCYC North racing buoy
41° 50.867N, 83° 21.841W

Cruising:

NCYC Center racing buoy
41° 49.457 N, 83° 21.842 W

Toledo Channel R-10
41° 47.750 N, 83° 15.354 W

NCYC North racing buoy
41° 50.867N, 83° 21.841W